

AC Surge Protector SPD RRPA DIN-Rail Assy 120/240 Vac
Split-Phase 210 A SASD, MOV 30 kA, UL 1449 4th Ed.



RRPA-120THC

Features

- SASD/MOV Hybrid Protection
- Replaceable Suppression Modules
- Dry Contact Remote Annunciation Wire Leads
- Replaceable Fuses (Some Models)
- WAGO Cage Clamp Connectors
- Panel Mount DIN-Rail Assembly
-

Applications

- Electrical Panelboards
- Industrial Automation
- Communications Base Stations
- IT & Data Centers
- Switchgear
- Motor Control Centers
- Automatic Transfer Switches
- Wastewater Treatment
- Oil & Gas
- LED Lighting
- Schools
- Hospitals
- Railroad Power Stations

Description

AC surge protector (also known as SPD or lightning protector) RRPA-120THC from Transtector is a UL1449 4th Ed. Type 2 DIN-Rail assy style SPD that utilizes state of the art SASD/MOV technology to protect critical equipment that operates on a 120/240 Vac split-phase electrical service. This surge protector provides effective protection against electrical transient surges that are generated both by external lightning events and by internal switching events and supports long-term system reliability by safely shunting high amounts of transient energy while maintaining a very low clamping voltage. Transtector AC surge protectors are available in stock with same day shipping.

Electrical Specifications

Description	Minimum	Typical	Maximum	Units
Service Voltages		120/240		Vac
Service Type		Split-Phase		
Current Rating			210	A
Maximum Continuous Operating Voltage (MCOV)				
L - L			300	Vac
L - N			150	Vac
L - G			150	Vac
N - G			150	Vac

Click the following link (or enter part number in "SEARCH" on website) to obtain additional part information including price, inventory and certifications:
[AC Surge Protector SPD RRPA DIN-Rail Assy 120/240 Vac Split-Phase 210 A SASD, MOV 30 kA, UL 1449 4th Ed. RRPA-120THC](#)

AC Surge Protector SPD RRPA DIN-Rail Assy 120/240 Vac
 Split-Phase 210 A SASD, MOV 30 kA, UL 1449 4th Ed.



RRPA-120THC

Surge Protection Specification

Description	Minimum	Typical	Maximum	Units
Surge Protection Technology		SASD, MOV		
Protection Modes		L-N, L-L, L-G		
8/20 μ s Surge Current			30	kA
V _{pl} 8/20 μ s L-N		525 @ 3kA		V _{pk}
Response Time			5	ns

Mechanical Specifications

Size

Height	4.92 in	[124.97 mm]
Width	8.83 in	[224.28 mm]
Depth	4.27 in	[108.46 mm]
Weight	4 lbs	[1.81 kg]

Environmental Specifications

Temperature Range (Operational)	-40 to +85 deg C
Environmental Protection Rating	IP 20
Humidity	95% non-condensing

Installation

Service Wiring Terminal	
WAGO Power Clamp Terminals	#4 to #40 AWG
Status Indication Terminal	
3-Position Screw Terminal	#16 to #22 AWG

Compliance Certifications

RoHS Compliant	Yes
UL Compliant	Yes
Certifications	UL 1449 4th Ed.

Click the following link (or enter part number in "SEARCH" on website) to obtain additional part information including price, inventory and certifications:
[AC Surge Protector SPD RRPA DIN-Rail Assy 120/240 Vac Split-Phase 210 A SASD, MOV 30 kA, UL 1449 4th Ed. RRPA-120THC](#)

AC Surge Protector SPD RRPA DIN-Rail Assy 120/240 Vac
Split-Phase 210 A SASD, MOV 30 kA, UL 1449 4th Ed.

RRPA-120THC



Transtector Systems specializes in protection of highly sensitive, low voltage equipment through its patented, non-degrading silicon diode technology and custom filters. Our power quality expertise translates into a diverse product offering including AC, DC, and signal applications as well as integrated cabinets, power distribution panels and EMP hardened devices.

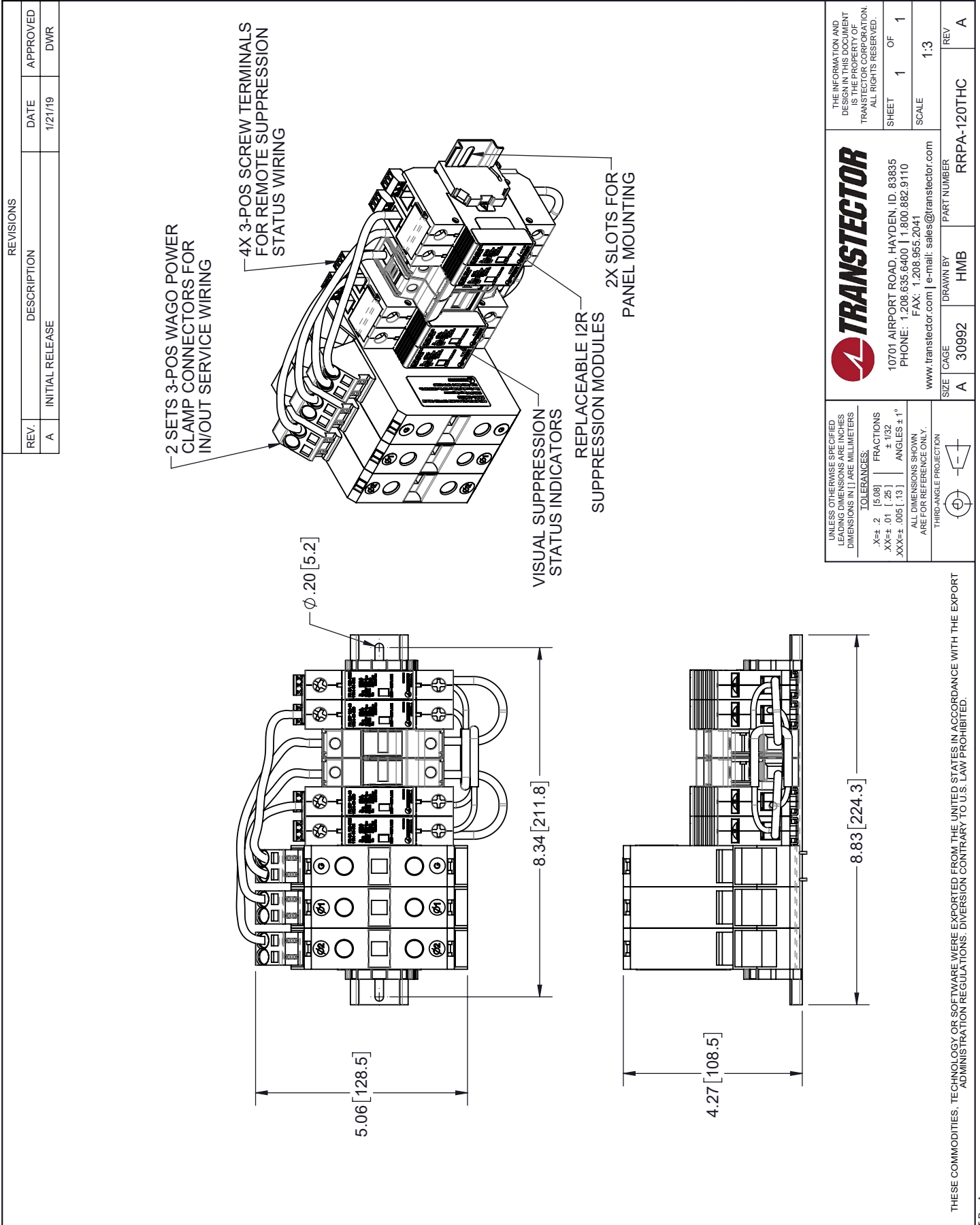
Click the following link (or enter part number in "SEARCH" on website) to obtain additional part information including price, inventory and certifications: [AC Surge Protector SPD RRPA DIN-Rail Assy 120/240 Vac Split-Phase 210 A SASD, MOV 30 kA, UL 1449 4th Ed. RRPA-120THC](https://www.transtector.com/ac-surge-protector-spd-rrpa-din-rail-rrpa-120thc-p.aspx)

URL: <https://www.transtector.com/ac-surge-protector-spd-rrpa-din-rail-rrpa-120thc-p.aspx>

The information contained in this document is accurate to the best of our knowledge and representative of the part described herein. It may be necessary to make modifications to the part and/or the documentation of the part, in order to implement improvements. Transtector reserves the right to make such changes as required. Unless otherwise stated, all specifications are nominal. Transtector does not make any representation or warranty regarding the suitability of the part described herein for any particular purpose, and Transtector does not assume any liability arising out of the use of any part or documentation.

AC Surge Protector SPD RRP A DIN-Rail Assy 120/240 Vac Split-Phase 210 A SASD, MOV 30 kA, UL 1449 4th Ed.

RRPA-120THC CAD Drawing



TRANSTECTOR

10701 AIRPORT ROAD, HAYDEN, ID, 83835
 PHONE: 1.208.635.6400 | 1.800.882.9110
 FAX: 1.208.955.2041
 www.transvector.com | e-mail: sales@transvector.com

SHEET 1 OF 1
SCALE 1:3

SIZE	CAGE	DRAWN BY	PART NUMBER
A	30992	HMB	RRPA-120THC
			REV A